

NAME: _____

Radio Communications Quiz

1) What are the radio frequencies for Portsmouth?

1) Ground _____

2) Tower _____

3) ATIS

2) When making initial contact to Air Traffic Control, what is the correct procedure?

1) _____

2) _____

3) _____

4)

a) Your full aircraft identification

b) Your current position

c) Name of the facility being called

d) Your message or request

3) Call signs should never be shortened on _____ contact.

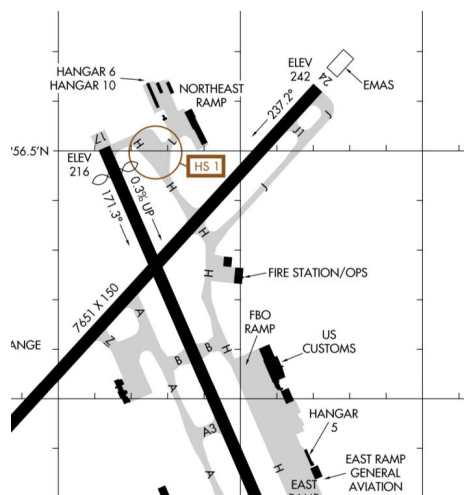
4) When making initial contact to either clearance (Class C Airport) or ground control, you should advise them that you have what?

4) When ground control gives you a taxi route, you should. (circle one)

a) Repeat the taxi route back

b) Reply with "roger" then "over"

5) Manchester ground calls you and says: “RV-271VA, Manchester Ground, taxi to runway 24 via Hotel then right on Juliet” - What is your reply?



6) Manchester ground says: “RV-271VA, Manchester Ground, taxi to runway 17 via Hotel” - Do you have permission to cross runway 24 at Hotel? **Y / N**

7) You are holding short of runway 34 at Portsmouth. You call Tower and they say: “RV-271VA, Portsmouth Tower, Runway 34 line up and wait” - What do you do and what are you not allowed to do?

8) You request a flight following from Portsmouth Ground. After departing the runway, Tower says: “RV-271VA, Portsmouth Tower, contact Boston Departure on 125.05” - What are your next two radio calls?

Portsmouth -

Boston -

9) When should you obtain the ATIS for your destination?

10) You are flying back into Portsmouth after practicing your maneuvers and are 10 miles to the north. You have ATIS information Foxtrot. What is your initial call to Portsmouth?

11) You are flying into Sanford Regional Airport. What is the AWOS and UNICOM frequency? Which frequency should you advise your position to local traffic on?

AWOS _____ UNICOM _____



12) How far out should you make your first call to Sanford and what should you say if you are planning to land runway 25?

13) You are coming in to land at KPSM and Portsmouth Tower clears you for the option. What are you allowed to do?

14) You are coming in to land at KPSM and Portsmouth Tower clears you for a low approach only. What do you do? What are you not allowed to do?

16) Define the Following:

a) Expedite:

b) Extend Downwind:

c) Left/Right Closed Traffic Approved:

d) Ident:

e) Squawk VFR:

f) Tower will call the Base:

g) Frequency Change Approved:

h) Land and Hold Short:

i) Go Around:

- j) Left/Right 360:
- k) Cleared 34 Number 2:
- l) Without Delay:
- m) Line Up and Wait:
- n) Standby:
- o) Stepped On:
- p) Touch and Go:
- q) Stop and Go:
- r) Full Stop:
- s) Looking for Traffic:
- t) Traffic in Sight:
- u) WILCO:
- v) Mayday:
- w) PanPan: